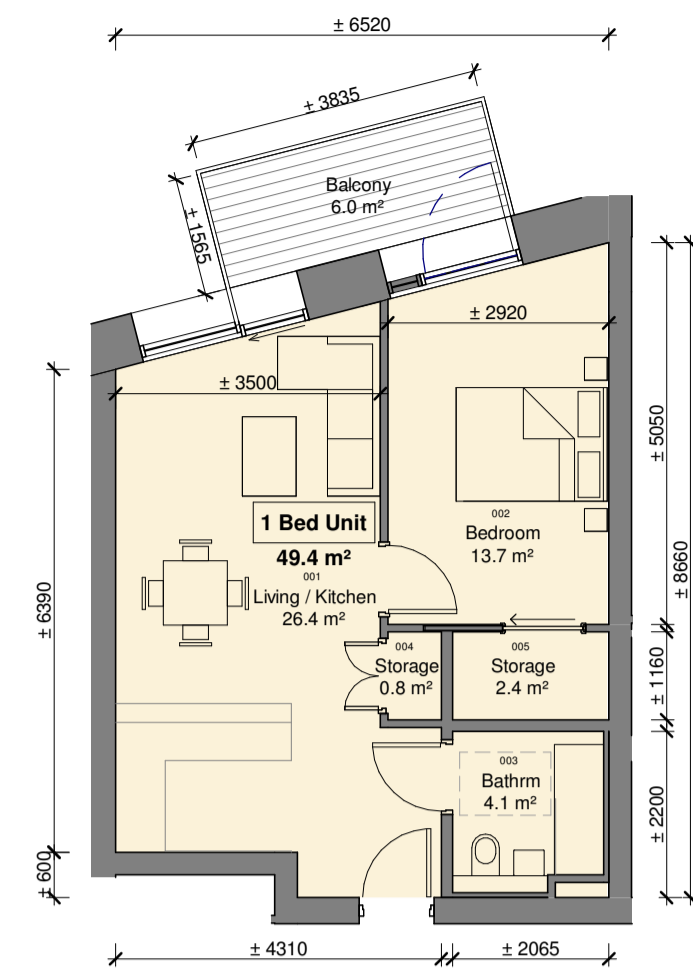


| Typical Unit Type 1BR-A1 |                  |                     |
|--------------------------|------------------|---------------------|
| Number                   | Name             | Area                |
| 001                      | Living / Kitchen | 30.3 m <sup>2</sup> |
| 002                      | Bedroom          | 13.8 m <sup>2</sup> |
| 003                      | Bathroom         | 4.2 m <sup>2</sup>  |
| 004                      | Storage          | 1.1 m <sup>2</sup>  |
| 005                      | Storage          | 3.5 m <sup>2</sup>  |
| Net Internal Area        |                  | 52.9 m <sup>2</sup> |
| Gross Area:              |                  | 55.3 m <sup>2</sup> |
| Unit Count:              |                  | 58                  |

Unit Type 1BR-A1 areas vary per unit - refer to HQA

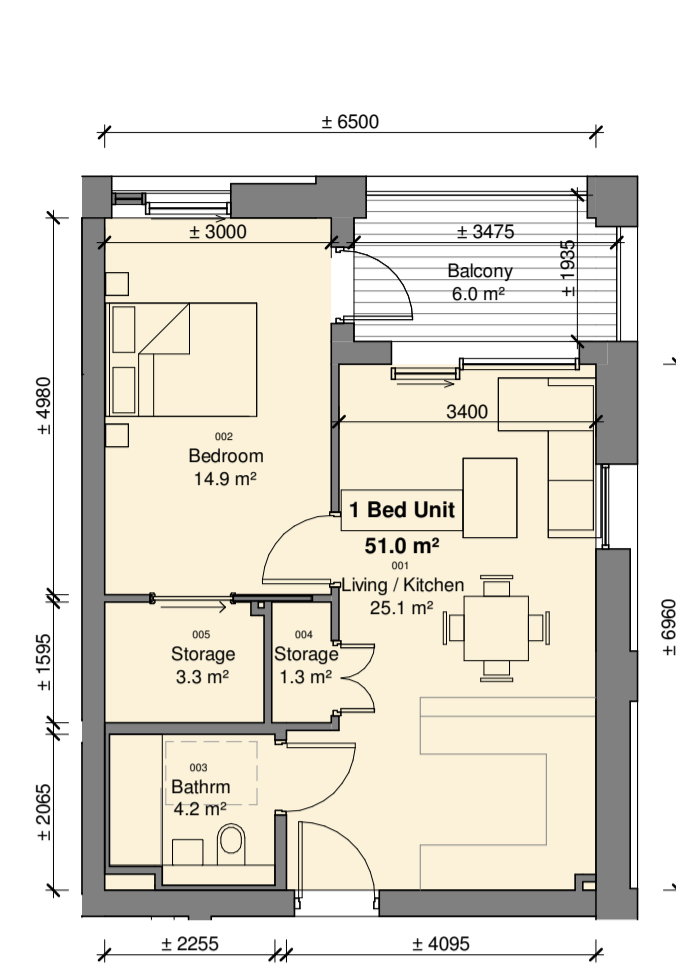
**1 Unit Type - 1BR-A1**  
scale 1 : 100



| Unit Type 1BR-A2  |                  |                     |
|-------------------|------------------|---------------------|
| Number            | Name             | Area                |
| 001               | Living / Kitchen | 26.4 m <sup>2</sup> |
| 002               | Bedroom          | 13.7 m <sup>2</sup> |
| 003               | Bathroom         | 4.1 m <sup>2</sup>  |
| 004               | Storage          | 0.8 m <sup>2</sup>  |
| 005               | Storage          | 2.4 m <sup>2</sup>  |
| Net Internal Area |                  | 47.4 m <sup>2</sup> |
| Gross Area:       |                  | 49.4 m <sup>2</sup> |
| Unit Count:       |                  | 4                   |

Unit Type 1BR-A2 areas vary per unit - refer to HQA

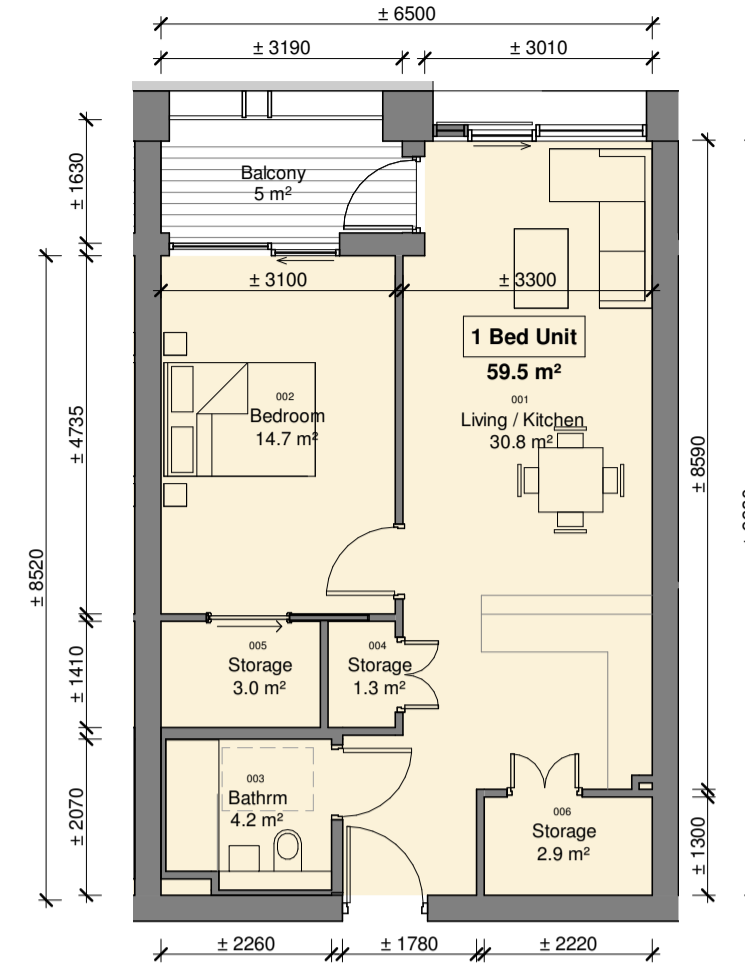
**2 Unit Type - 1BR-A2**  
scale 1 : 100



| Unit Type 1BR-B1  |                  |                     |
|-------------------|------------------|---------------------|
| Number            | Name             | Area                |
| 001               | Living / Kitchen | 25.1 m <sup>2</sup> |
| 002               | Bedroom          | 14.9 m <sup>2</sup> |
| 003               | Bathroom         | 4.2 m <sup>2</sup>  |
| 004               | Storage          | 1.3 m <sup>2</sup>  |
| 005               | Storage          | 3.3 m <sup>2</sup>  |
| Net Internal Area |                  | 48.8 m <sup>2</sup> |
| Gross Area:       |                  | 51 m <sup>2</sup>   |
| Unit Count:       |                  | 4                   |

Unit Type 1BR-B1 areas vary per unit - refer to HQA

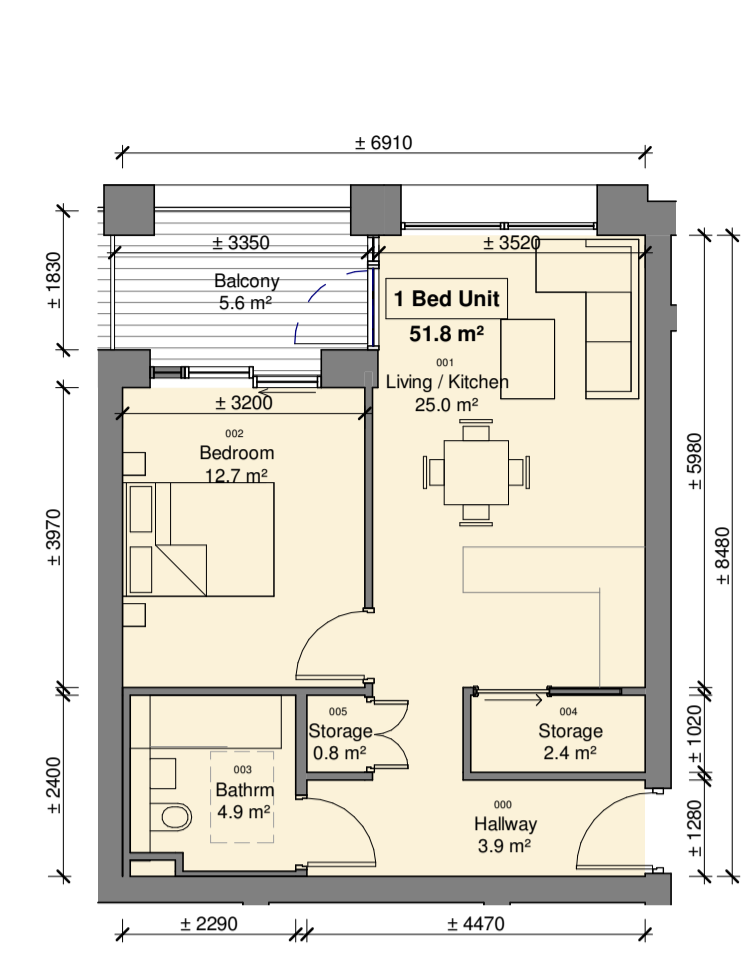
**3 Unit Type - 1BR-B1**  
scale 1 : 100



| Unit Type 1BR-B2  |                  |                     |
|-------------------|------------------|---------------------|
| Number            | Name             | Area                |
| 001               | Living / Kitchen | 30.8 m <sup>2</sup> |
| 002               | Bedroom          | 14.7 m <sup>2</sup> |
| 003               | Bathroom         | 4.2 m <sup>2</sup>  |
| 004               | Storage          | 1.3 m <sup>2</sup>  |
| 005               | Storage          | 3.0 m <sup>2</sup>  |
| 006               | Storage          | 2.9 m <sup>2</sup>  |
| Net Internal Area |                  | 56.8 m <sup>2</sup> |
| Gross Area:       |                  | 59.5 m <sup>2</sup> |
| Unit Count:       |                  | 4                   |

Unit Type 1BR-B2 areas vary per unit - refer to HQA

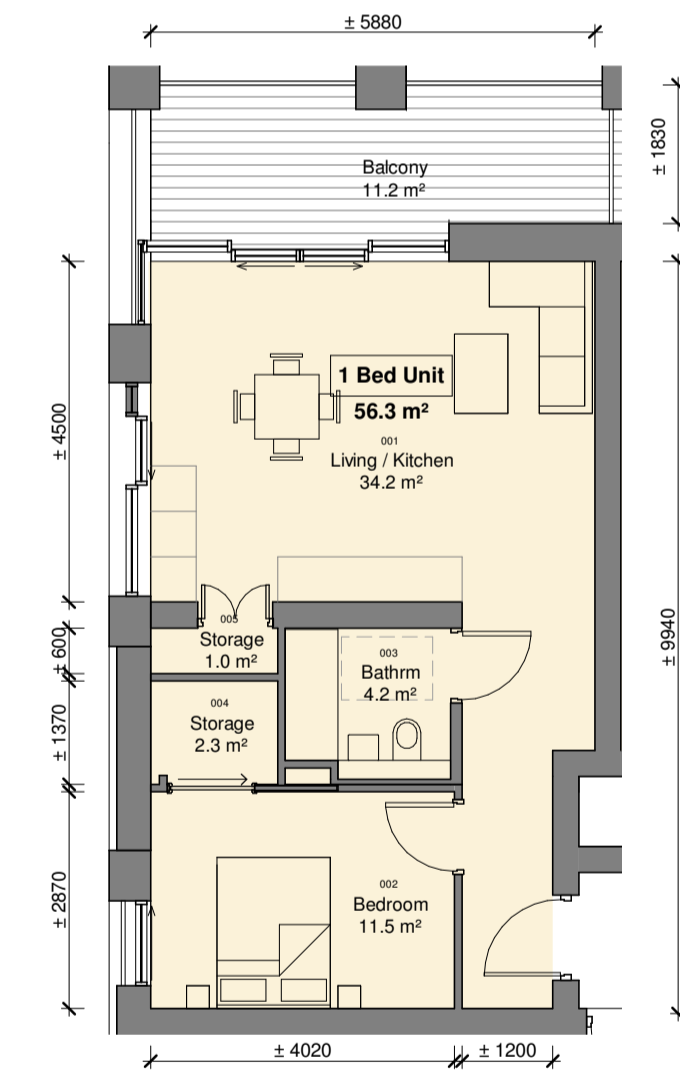
**4 Unit Type - 1BR-B2**  
scale 1 : 100



| Unit Type 1BR-B3  |                  |                     |
|-------------------|------------------|---------------------|
| Number            | Name             | Area                |
| 000               | Hallway          | 3.9 m <sup>2</sup>  |
| 001               | Living / Kitchen | 25.0 m <sup>2</sup> |
| 002               | Bedroom          | 12.7 m <sup>2</sup> |
| 003               | Bathroom         | 4.9 m <sup>2</sup>  |
| 004               | Storage          | 2.4 m <sup>2</sup>  |
| 005               | Storage          | 0.8 m <sup>2</sup>  |
| Net Internal Area |                  | 49.6 m <sup>2</sup> |
| Gross Area:       |                  | 52.1 m <sup>2</sup> |
| Unit Count:       |                  | 2                   |

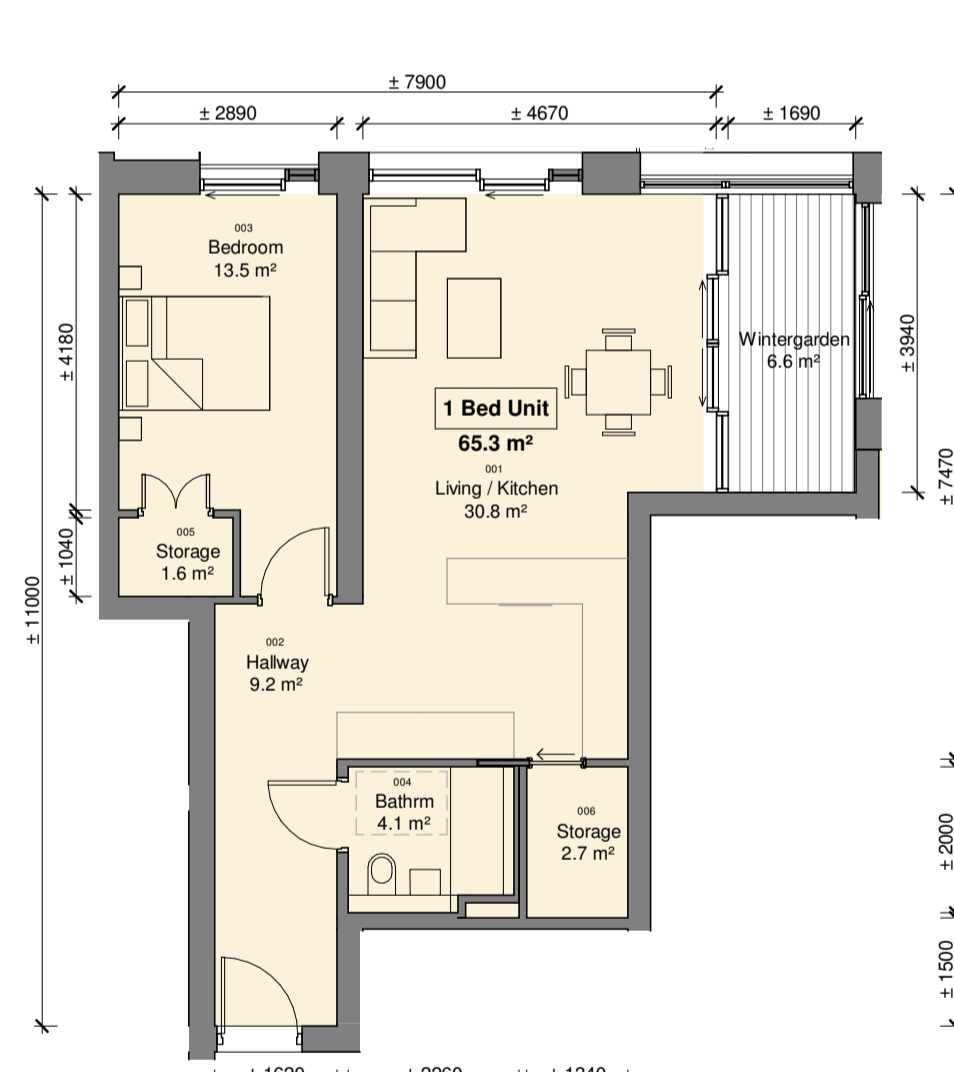
Unit Type 1BR-B3 areas vary per unit - refer to HQA

**5 Unit Type - 1BR-B3**  
scale 1 : 100



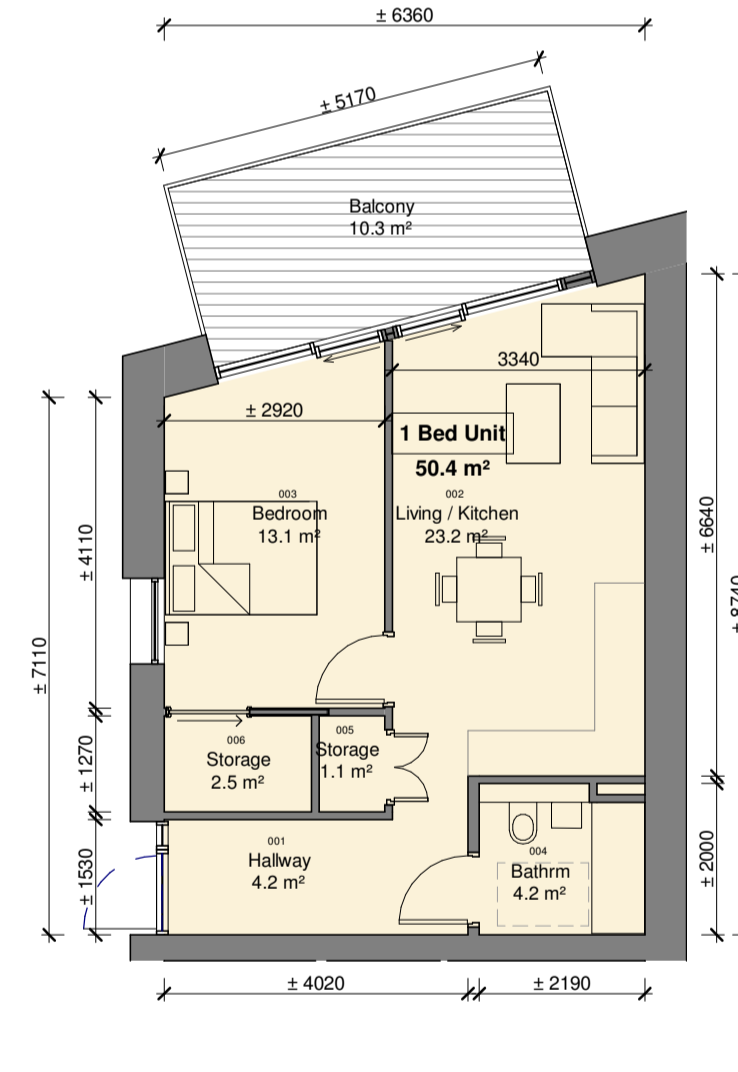
| Unit Type 1BR-C1  |                  |                     |
|-------------------|------------------|---------------------|
| Number            | Name             | Area                |
| 001               | Living / Kitchen | 34.2 m <sup>2</sup> |
| 002               | Bedroom          | 11.5 m <sup>2</sup> |
| 003               | Bathroom         | 4.2 m <sup>2</sup>  |
| 004               | Storage          | 2.3 m <sup>2</sup>  |
| 005               | Storage          | 1.0 m <sup>2</sup>  |
| Net Internal Area |                  | 53.2 m <sup>2</sup> |
| Gross Area:       |                  | 56.3 m <sup>2</sup> |
| Unit Count:       |                  | 2                   |

**6 Unit Type - 1BR-C1**  
scale 1 : 100



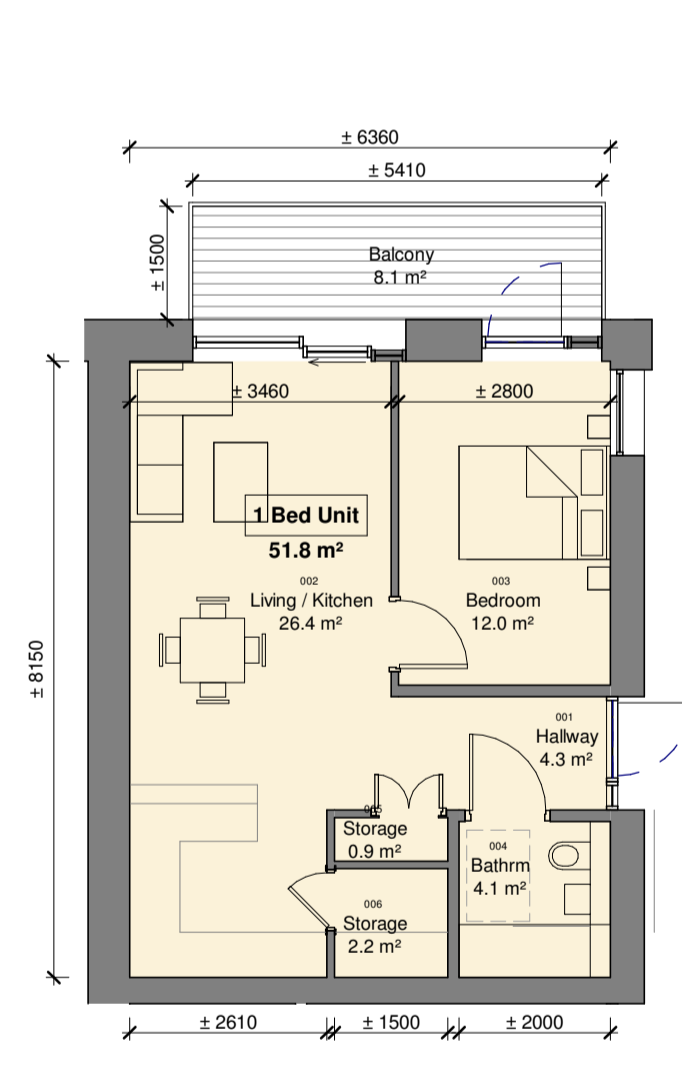
| Unit Type 1BR-D1  |                  |                     |
|-------------------|------------------|---------------------|
| Number            | Name             | Area                |
| 001               | Living / Kitchen | 30.8 m <sup>2</sup> |
| 002               | Hallway          | 9.2 m <sup>2</sup>  |
| 003               | Bedroom          | 13.5 m <sup>2</sup> |
| 004               | Bathroom         | 4.1 m <sup>2</sup>  |
| 005               | Storage          | 1.6 m <sup>2</sup>  |
| 006               | Storage          | 2.7 m <sup>2</sup>  |
| Net Internal Area |                  | 61.8 m <sup>2</sup> |
| Gross Area:       |                  | 65.3 m <sup>2</sup> |
| Unit Count:       |                  | 1                   |

**7 Unit Type - 1BR-D1**  
scale 1 : 100



| Unit Type 1BR-E1  |                  |                     |
|-------------------|------------------|---------------------|
| Number            | Name             | Area                |
| 001               | Hallway          | 4.2 m <sup>2</sup>  |
| 002               | Living / Kitchen | 23.2 m <sup>2</sup> |
| 003               | Bedroom          | 13.1 m <sup>2</sup> |
| 004               | Bathroom         | 4.2 m <sup>2</sup>  |
| 005               | Storage          | 1.1 m <sup>2</sup>  |
| 006               | Storage          | 2.5 m <sup>2</sup>  |
| Net Internal Area |                  | 48.3 m <sup>2</sup> |
| Gross Area:       |                  | 50.4 m <sup>2</sup> |
| Unit Count:       |                  | 1                   |

**8 Unit Type - 1BR-E1**  
scale 1 : 100



| Unit Type 1BR-F1  |                  |                     |
|-------------------|------------------|---------------------|
| Number            | Name             | Area                |
| 001               | Hallway          | 4.3 m <sup>2</sup>  |
| 002               | Living / Kitchen | 26.4 m <sup>2</sup> |
| 003               | Bedroom          | 12.0 m <sup>2</sup> |
| 004               | Bathroom         | 4.1 m <sup>2</sup>  |
| 005               | Storage          | 0.9 m <sup>2</sup>  |
| 006               | Storage          | 2.2 m <sup>2</sup>  |
| Net Internal Area |                  | 48.8 m <sup>2</sup> |
| Gross Area:       |                  | 51.8 m <sup>2</sup> |
| Unit Count:       |                  | 1                   |

**9 Unit Type - 1BR-F1**  
scale 1 : 100

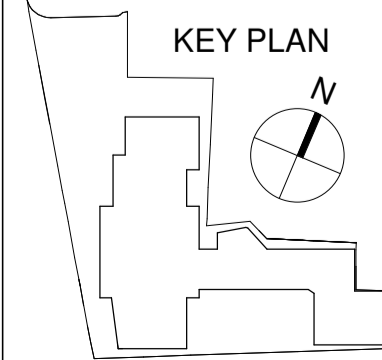
| 1 BR UNIT TYPES COUNT |            |       |
|-----------------------|------------|-------|
| Unit Type             | Type       | Count |
| 1BR-A1                | 1 Bed Unit | 58    |
| 1BR-A2                | 1 Bed Unit | 4     |
| 1BR-B1                | 1 Bed Unit | 4     |
| 1BR-B2                | 1 Bed Unit | 10    |
| 1BR-B3                | 1 Bed Unit | 2     |
| 1BR-C1                | 1 Bed Unit | 2     |
| 1BR-D1                | 1 Bed Unit | 1     |
| 1BR-E1                | 1 Bed Unit | 1     |
| 1BR-F1                | 1 Bed Unit | 1     |
| Grand total:          |            | 83    |

NOTES:

Check all dimensions on site. Do not rely on scaled dimensions. This drawing must be read in conjunction with all relevant contract documents.

NOTE:  
- All details associated with Drainage, Structure and Civil works refer to drawings and information by CS Consulting Group.  
- All details associated with Mechanical and Electrical works refer to drawings and information by Renaissance Engineering Ltd.  
- All details associated with Landscaping works refer to drawings and information by Murray & Associates - Refer to Unit Types Drawings Sheet nos. 1015-1016 for information on all apartment sizes  
- Vertical height dimensions may vary due to fall of topography relative to view

This drawing is the property of Michael Collins Associates Ltd. (trading as MCA Architects). The drawing shall not be copied, reproduced or otherwise used without the consent of Michael Collins Associates Ltd.



| Rev | Date     | Description               | Dm | Chkd | Rev | Date | Description | Dm | Chkd |
|-----|----------|---------------------------|----|------|-----|------|-------------|----|------|
| P01 | 21/10/21 | Issued for Planning       | GV | BH   |     |      |             |    |      |
| P02 | 31/05/22 | Issued for Information    | GV | BH   |     |      |             |    |      |
| P03 | 29/06/22 | Issued for SHD Submission | GV | BH   |     |      |             |    |      |

|  |  |   |
|--|--|---|
| Architecture + Interior Design + Masterplanning + Project Management | Client: Tetraarch Residential Ltd.             | Job No: 2020.38                         |
|  | Project: Senior Living Residential Development | Sheet: A1                               |
|  | Drawing: Unit Types - 1 Bedroom                | Scale:                                  |
|  | Stage: PLANNING                                | Status Code: S9                         |
|  | Status: SUITABLE FOR INFORMATION               | Drawing Number: BSL-MCA-00-XX-DR-A-1016 |

4 Harcourt Wharf, Aungier Road, Dublin 2, Ireland.  
+353 1 6760916 info@mca.ie www.mca.ie

PROVISION