



1 Ground Floor_Part V
scale1 : 250



2 Level 01_Part V
scale1 : 250

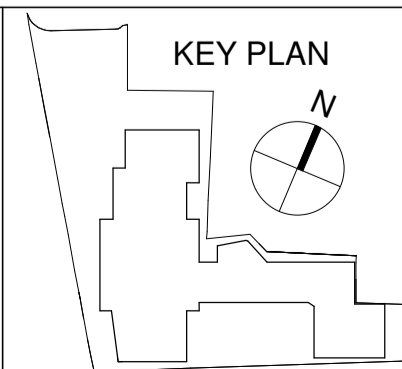
NOTES:

Check all dimensions on site. Do not rely on scaled dimensions. This drawing must be read in conjunction with all relevant contract documents.

NOTE:

- All details associated with Drainage, Structure and Civil works refer to drawings and information by CS Consulting Group.
- All details associated with Mechanical and Electrical works refer to drawings and information by Renaissance Engineering Ltd.
- All details associated with Landscaping works refer to drawings and information by Murray & Associates
- Refer to Unit Types Drawings Sheet nos. 1015-1016 for information on all apartment sizes
- Vertical height dimensions may vary due to fall of topography relative to view

This drawing is the property of Michael Collins Associates Ltd. (trading as MCA Architects). The drawing shall not be copied, reproduced or otherwise used without the consent of Michael Collins Associates Ltd.



Rev	Date	Description	Drn	Chkd	Rev	Date	Description	Drn	Chkd
P01	21/10/21	Issued for Planning	GV	BH					
P02	31/05/22	Issued for Information	GV	BH					
P03	29/06/22	Issued for SHD Submission	GV	BH					

Architecture + Interior Design + Masterplanning + Project Management



4 Harcourt Wharf,
Alger Road,
Dublin 2, Ireland
+353 1 6760916
info@mca.ie
www.mca.ie

Client:	Tetrarch Residential Ltd.	Job No:	2020.38
Project:	Senior Living Residential Development	Sheet:	A1
Drawing:	Part V Proposal - Distribution Sheet 1 of 2	Scale:	
Stage:	PLANNING	Status Code:	S9
Status:	SUITABLE FOR INFORMATION	Revision:	
Drawing Number:	BSL-MCA-00-XX-DR-A-1018		

REVISION: