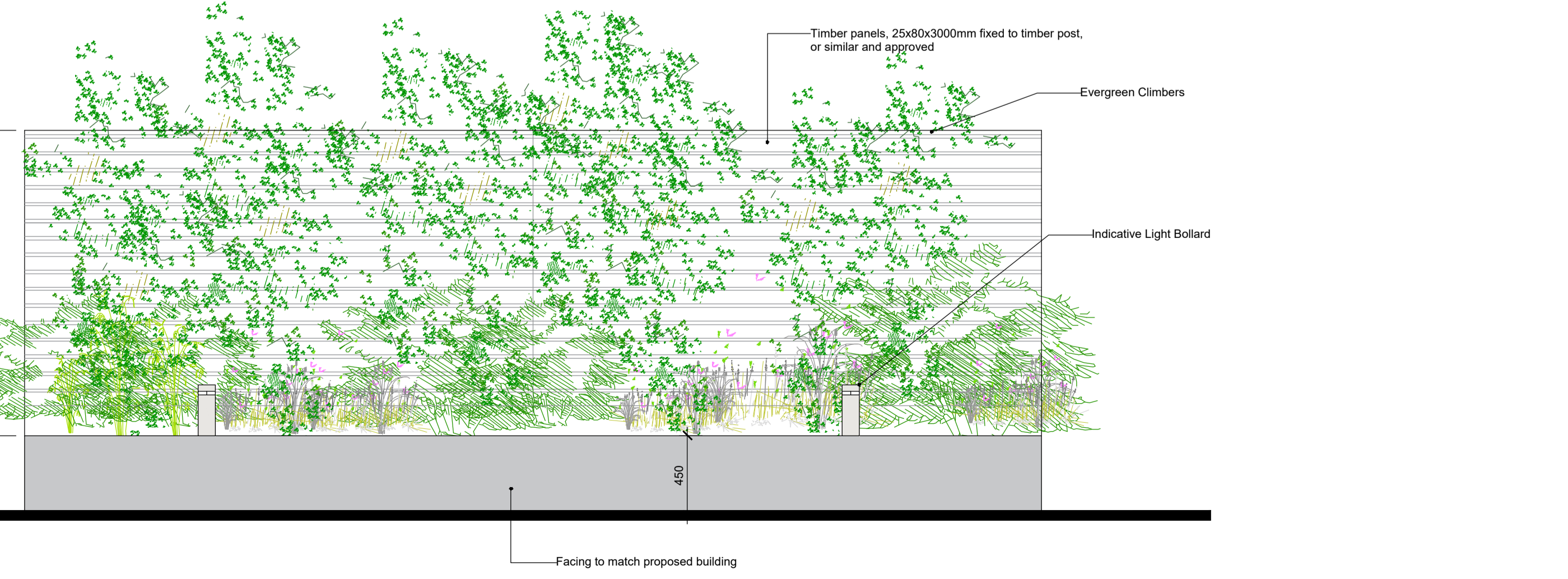
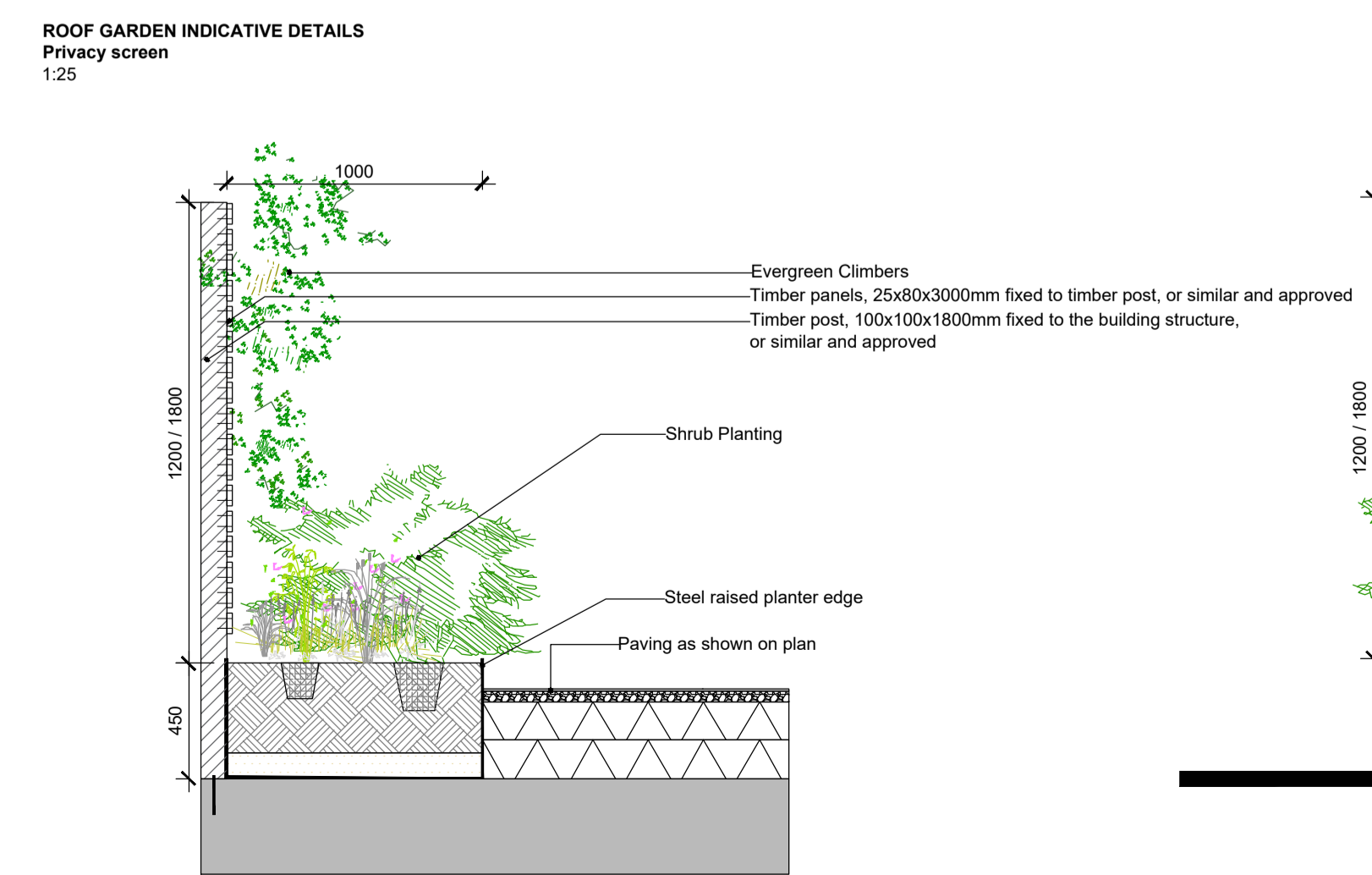


- ### LEGEND
- #### SOFT LANDSCAPE
- Proposed Roof Garden Tree Planting**
to include the following indicative multistem species:
Amelanchier lamarkii, *Betula pendula*, *Corylus avellana*, *Magnolia stellata*, *Prunus serrulata*
- Roof Garden Planting**
Min. 300/450mm topsoil depth
Low-maintenance planting 300-450mm topsoil, to include the following indicative species:
Lavandula stoechas, *Sarcococca confusa*, *Erica carnea*, 'Springwood white', *Vincetoxicum*, *Libertia formosa*, *Panicum virgatum* 'Squaw', *Festuca glauca* 'Elijah Blue', *Stachys byzantina*
- Extensive Roof**
Biodiverse Native Sedum / Wildflower Roof
- #### HARD LANDSCAPE
- Flag paving**
Textured Flags and/or similar approved, Stacked bond, 400x400x50mm, on pedestal support system or similar approved. Colour: Silver/Mid-Grey.
- Paving Areas**
PC Block Permeable Paving Stretcher bond, Silver/Mid-Grey, or similar approved.
- #### LANDSCAPE ELEMENTS & FURNITURE
- Raised Planter**
Steel Raised Planter Edge, 450mm above finish floor, Galvanized and Powder Coated, or similar and approved
- Planter Wall**
Timber panels, 25x80x3000mm fixed to timber post, 100x100x1800mm fixed to concrete surface
- Seating**
Seating Element cantilevered from edge of Raised Planter.
- Safety Balustrade**
1100mm min high protective railing/high edge along edge of roof terrace, per Architects' Plans, Details, and Specification.
- This drawing is intended to show landscape architectural proposals only. Please refer to Architects and Engineers drawings for exact details of buildings, structures, roads, parking, etc.
 - The copyright of this drawing is vested with Murray & Associates. This drawing may not be copied or reproduced without written consent.
 - All materials referred to on this drawing - including plant species - are indicative and subject to change following detailed site investigation. Significant changes, if any are required, will be referred to the relevant authority for agreement.
 - This drawing is not suitable for use for construction purposes.
 - Discrepancies to be referred to Murray & Associates for clarification.



murray & associates
landscape architecture

14 The Seaport Building, m@l@murray-associates.com
44-45 Clonliff Road, www.murray-associates.com
Dublin 3, D03 R9K3 +353 (0)1 854 0590

REV	DATE	REVISION	DRAWN	CHECKED
3	05/07/22	Issue	FT	MB
2	22/06/22	Issue	FT/IV	MB
1	10/06/22	Draft Issue	FT	MB
IFP 20/10/21 Issue for Pre-Planning VI MB				

CLIENT
Tetrarch Residential Ltd

PROJECT TITLE
Stradbroke Road SHD

SHEET TITLE
Green Roof Masterplan

SHEET NO.	SHEET SIZE
1873_PL_P_01A	A1
SCALE	REVISION
As shown	3
STAGE	DATE
Planning	05/07/22

Please refer to 1873_PL_P_01 for Site Masterplan